

QUICK REFERENCE CARD FOR

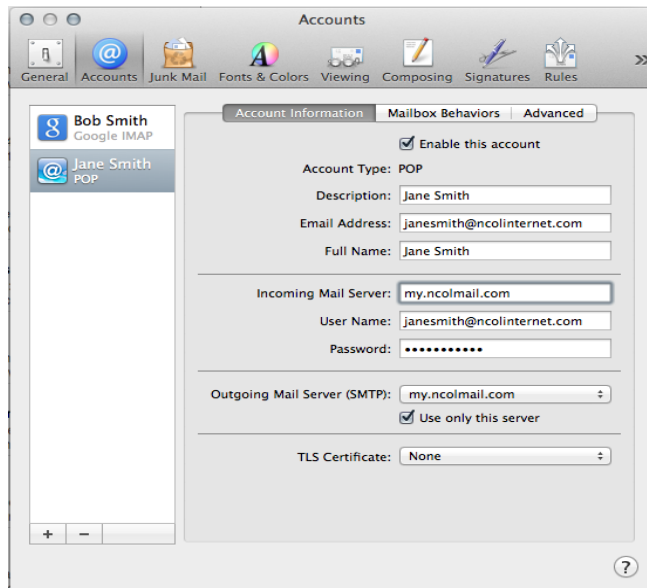
Configuring SSL for Mac OS X Mail

NOTE: The following instructions are for configuring your NCOL Mail account to use SSL settings in Mac OS X Mail. Similar steps will be required for other email clients.

From the **Mail** menu, select **Preferences**

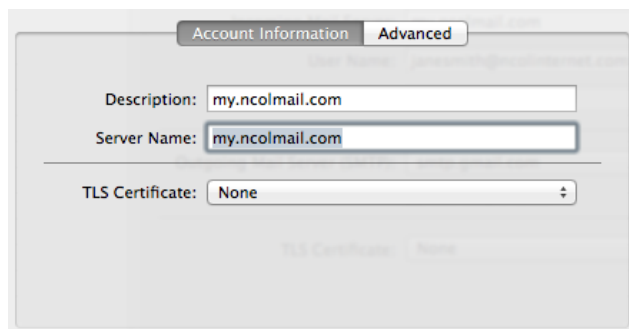


When the **Preferences** window opens click **Accounts**

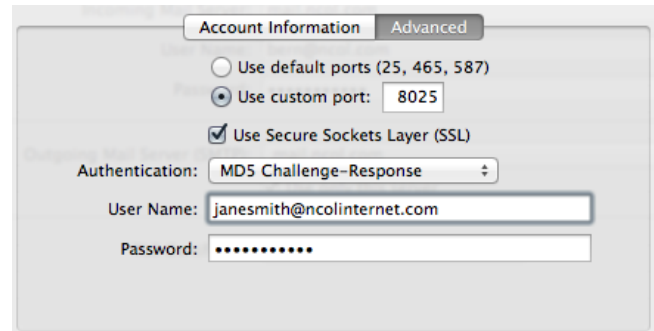


On the **Accounts** page choose the email account to configure on the left. Then under the **Account Information** tab on the right, make the following changes:

- Replace **Incoming Mail Server** with: **my.ncolmail.com**
- Beside **Outgoing Mail Server (SMTP)** select **Edit SMTP Server List**.
- Click the **+** to add a new SMTP server.

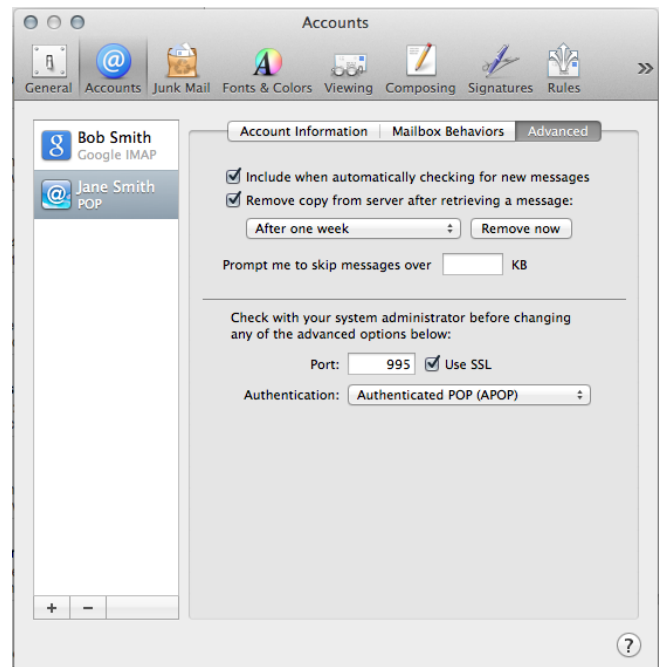


- On the **Account Information** tab, under **Description** and **Server Name** enter **my.ncolmail.com**
- Then switch to the **Advanced** tab.



- On the **Advanced** tab, check the box beside **Use Secure Socket Layer (SSL)** and enter a custom port of **8025**.
- Beside **Authentication** choose **MD5 Challenge-Response**, and then enter your email account for the **User Name** field and your password in the **Password** field.
- Click **OK** to save the new SMTP server.
- Make sure it is now selected for **Outgoing Mail Server (SMTP)** on the **Account Information** tab.

Switch to the **Advanced** tab to make the following change:



- Check the **Use SSL** box and make sure the **Port** is set to **995**.

That's it! Congratulations, you've successfully configured your email client to use SSL-encrypted connections.